



## 2018-2019 Annual Community Schools Sponsorship Report

Annually, sponsors in Ohio are required to evaluate the performance and compliance of each of their sponsored schools.

Richland Academy of the Arts (RAA) proudly announces its third consecutive “Effective” rating from the Ohio Department of Education. We also received an *Exemplary* score in compliance, as we’ve done every evaluation year.

These designations validate our commitment to quality. RAA uses rigorous standards, based on the National Association of Charter School Authorizers’ framework, to select schools to sponsor and to hold schools accountable to academic, organizational, fiscal, and legal performance goals.

Our authorizing mission is to provide the oversight, monitoring, technical assistance, resources and leadership needed and wanted by its sponsored community schools for them to provide their students with superior academic opportunities while maintaining sound financial viability without violating their autonomy.

This 2019 Annual Community Schools Sponsorship Report demonstrates our commitment to our mission and to transparency.

We happily share our success and note where improvement is needed. We quest to continually better our work and our schools.

We are a community united in providing proven quality school choice. We commend the efforts of school leaders, teachers, management companies, parents, students, school boards, and RAA staff. We are thankful for the support and guidance of the RAA Board of Directors.

RAA sponsored three community schools during school year 2019:

*Cesar Chavez College Preparatory School (Columbus)*

*Columbus Bilingual Academy North (Columbus)*

*Lorain Bilingual Preparatory Academy (Lorain)*

***RAA schools OUTPERFORMED schools' students would have otherwise attended.***

- Cesar Chavez College Preparatory School outperformed Columbus City School's performance index by 20 points.
- Columbus Bilingual Academy North (CBAN) increased 9.7 points on the Performance Index (the state average Performance Index gain was 0.4 points). This places CBAN in the top 50 of Ohio's 3,226 schools in performance index growth.
- Cesar Chavez College Preparatory School attained an "A" in the closing the academic achievement gap measure AND the progress measure.
- Cesar Chavez College Preparatory School is in the top 89<sup>th</sup> percentile of all Columbus City and charter schools on the performance index and is one of only 48 community schools to be designated as a "Community School of Quality".
- For the third consecutive year, Cesar Chavez College Preparatory School had a much higher value-added index than Columbus City School District and nearby district schools, evidencing the school is much more successful in growing students academically.
- Columbus Bilingual Academy North went from underperforming the Columbus City School performance index to outperforming.

RAA's Performance Framework provides a rating in each of the academics, finances, operational/ organizational, and legal areas, as well as an overall average. Ratings are determined by national best practices indicators, are based on the Local Report Card, site visits, audits, financial statements, and other evidentiary documents, and are part of the school contract (Appendix G). An "exceeds" rating earns two points, a "meets" rating earns one point, and a "does not meet" rating earns no points for applicable indicators. Points are averaged for each area, and for the overall total. Schools must implement an improvement plan for any area scoring below 1.0 points. Performance Framework scores are considered during ongoing monitoring, and play a key role in the contract renewal process.



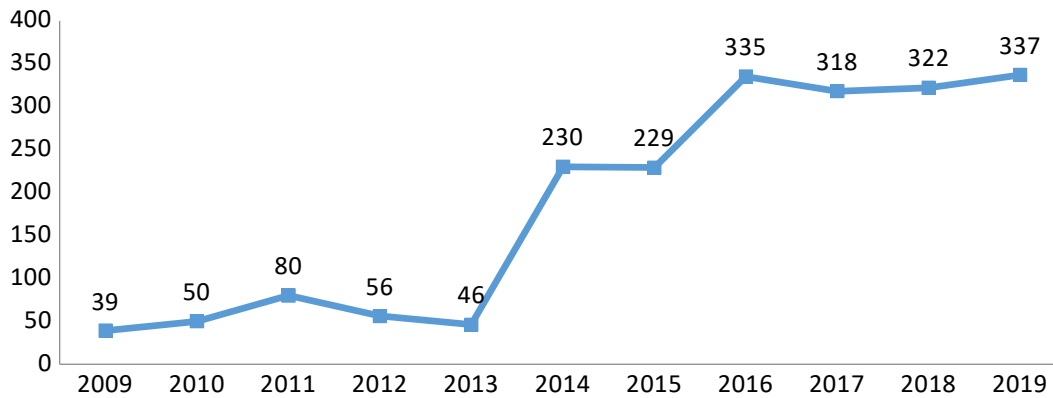
**Cesar Chavez**  
College Preparatory  
School

**Cesar Chavez College Preparatory School (K-5)**

**2400 Mock Road  
Columbus, OH 43219**

- 
1. First year of operation: school year 2008-2009
  2. Contract term: June 30, 2022 (three-year renewal)
  3. Management Company: Educational Solutions Company

1. Enrollment



100% economically disadvantaged, 67% English language learners, 95% minority, 20% mobility

5. Mission: To make a world of difference through quality research and results-based education, high academic and social standards, and a caring environment for our students.

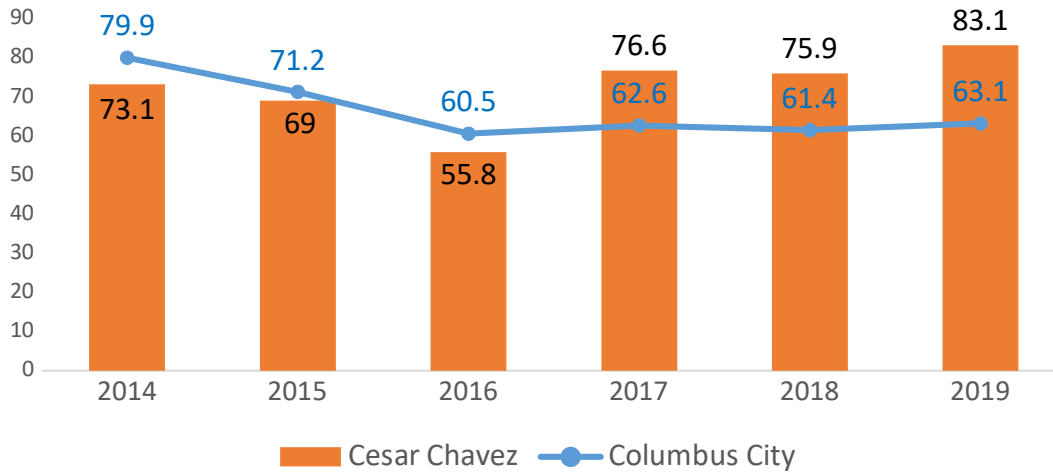
6. Academic performance history and comparison

	Overall	Progress	Performance Index	Gap Closing	Improving At-Risk K3 reader
2010	NR	NR	51.6	Met	
2011	Academic Watch	NR	52.9	Not Met	
2012	NR	NR	41.6	Not Met	
2013	Not calculated	C	65.7	F	
2014	Not calculated	C	73.1	F	
2015	Not calculated	A	68.9	F	F
2016	Not calculated	F	55.8	F	F
2017	Not calculated	A	76.6	B	D
2018	C	B	75.9	B	D
2019	B	A	83.1	A	D

***Cesar Chavez College Preparatory School ranks 18<sup>th</sup> out of 171 Columbus City and charter schools (89<sup>th</sup> percentile) on the Performance Index***

## 2019 results

Cesar Chavez's Performance Index compared to Columbus City Schools' Performance Index



School	Overall Grade	Progress	Value Added Index	Gap closing	Performance Index	Improving At-Risk K-3 reader
Cesar Chavez College Preparatory Academy	B	A	5.03	A	83.1	D
East Linden Elementary	C	A	1.44	B	59.9	F
Linden STEM (K-6)	F	D	-6.91	F	49.4	F
South Mifflin Elementary	C	D	-3.59	A	73.1	D
<b>Columbus City Schools</b>	D	F	-31.35	B	63.1	D

### 7. Strengths & Concerns:

#### Strengths:

- “A” in value-added; Columbus City district rated “F”
- Outscored the district in value-added index by large margins for the third consecutive year
- Outscored the district by 20 performance index points

#### Concerns:

- “D” on Improving At-Risk K-3 reader

### 8. Performance Framework

<b>Expected Academic outcomes</b>	<b>Meets</b>
Performance Index	Exceeds
Indicators Met	Does Not Meet
Overall Value Added	Exceeds
Value Added – Lowest 20%	Exceeds
Value Added- students with disabilities	Not rated
Value Added- gifted	Not rated
Improving At-Risk K3 reader	Does not meet
Gap Closing	Exceeds
Performance vs. Local Market PI	Exceeds
Performance vs. Local Market VA	Exceeds
Mission specific	To be determined
Student subgroup (English learners)	To be determined
Chronic Absenteeism	Meets
	$13/9 = 1.4$

<b>Expected Financial outcomes</b>	<b>Meets</b>
Current ratio of assets to liabilities	Exceeds
Days cash	Does Not Meet
Current year enrollment variance	Exceeds
Multi-year ratio of assets to liabilities	Exceeds
Cash flow	Exceeds
Total margin and aggregated 3-year total margin	Meets
	$7/6 = 1.2$

<b>Expected Organizational/Operational outcomes</b>	<b>Meets</b>
Records compliance	Exceeds
On time records submission rate	Exceeds
Financial records submitted monthly	Exceeds
Annual audit	Exceeds
LEA Special Education performance determination	Meets
5-Year Forecasts submitted to ODE by deadline	Exceeds
Preopening Assurances documentation	Exceeds
Annual Report	Exceeds
Safety Plan and Blueprint to Ohio Attorney General	Exceeds
Family Survey results	Does Not Meet
Code of Regulations	Exceeds
Fulfillment of meeting & training requirements	Exceeds
Open meeting requirements	Exceeds
Board compliance w/& execution of educational program	Exceeds
	$25/14 = 1.8$

<b>Expected Legal Compliance</b>	<b>Meets</b>
Requirements identified in statute	Meets
Compliance w/ all rules & law as applicable	Meets
	$2/2 = 1$

**Cesar Chavez College Preparatory Academy Overall Performance Framework Average = 1.35**



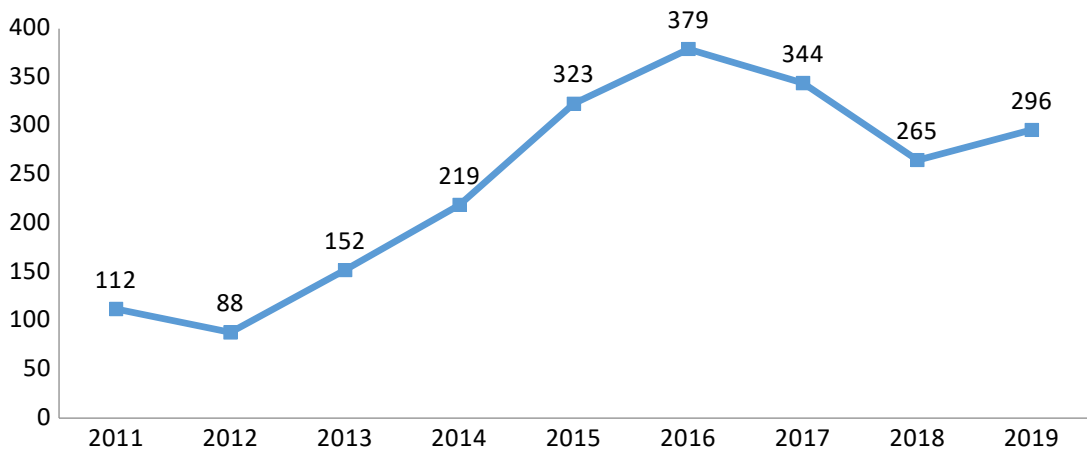
## Columbus Bilingual Academy- North (K-7)

2100 Morse Road

Columbus, OH

**43224**

1. First year of operation: school year 2010-11
2. Contract term: June 30, 2020 (one-year renewal)
3. Management Company: ACCEL Schools
4. Enrollment:



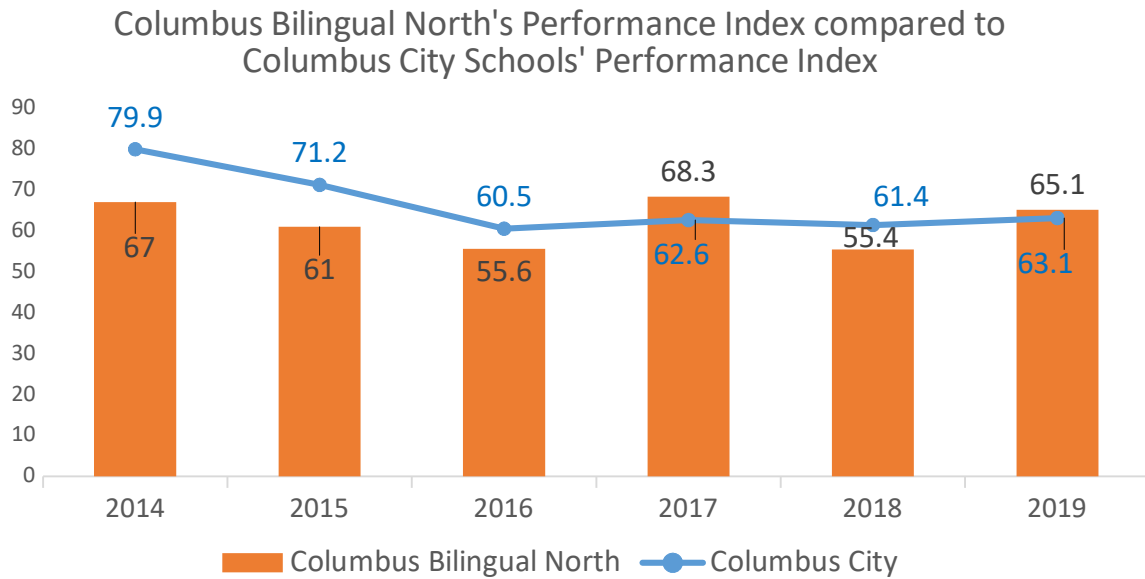
11% special education, 100% economically disadvantaged, 67% ELL, 49% minority, 22% mobility

5. Mission: Our mission at Columbus Bilingual Academy is to provide a nurturing environment of academic excellence, which provides for the development of responsible cross-cultural world citizens with an enriched understanding of self and others.
6. Academic performance history and comparison

	Overall	Progress	Performance Index	Gap Closing	Improving At-Risk K3 reader
2011	Academic Watch	Met	74.6	Not Met	
2012	Effective	Above	80.6	Not Met	
2013	Not calculated	A	67.0	F	
2014	Not calculated	B	67.0	F	
2015	Not calculated	D	61.0	F	D
2016	Not calculated	C	55.6	F	D
2017	Not calculated	C	68.3	F	D
2018	F	F	55.4	F	D
<b>2019</b>	<b>D</b>	<b>D</b>	<b>65.1</b>	<b>B</b>	<b>NR</b>

***Columbus Bilingual Academy North ranks 72nd out of 171 Columbus City and charter schools (58th percentile)***

**2019 results**



School	Overall Grade Letter Grade	Progress	Value Added Index	Gap Closing	Performance Index	Improving At-Risk K-3 reader
<b>Columbus Bilingual Academy North</b>	D	D	-2.57	B	65.1	NR
Forest Park Elementary	C	C	0.13	B	68.0	F
Northtowne Elementary	D	D	-4.52	B	58.0	D
Parkmoor Elementary	C	C	0.27	B	75.1	D
<b>Columbus City Schools</b>	D	F	-31.35	B	63.1	D

**Strengths & Concerns**

**Strengths:**

- Outperforms Columbus City Schools value-added, value added index and performance index

**Concerns:**

- “D” on value added
- underperforming when compared to area schools

## 8. Performance Framework

<b>Expected Academic outcomes</b>	<b>Does not meet</b>
Performance Index	Meets
Indicators Met	Does not meet
Overall Value Added	Does not meet
Value Added - Lowest 20%	Does not meet
Value Added- students with disabilities	Not rated
Value Added- gifted	Not rated
Improving At-Risk K3 reader	Not rated
Gap Closing	Exceeds
Performance vs. Local Market PI	Exceeds
Performance vs. Local Market VA	Does not meet
Mission specific	To be determined
Student Subgroup (English learners)	To be determined
Chronic Absenteeism	Did not meet
	$5/8 = 0.625$

<b>Expected Financial outcomes</b>	<b>Meets</b>
Current ratio of assets to liabilities	Meets
Days cash	Exceeds
Current year enrollment variance	Exceeds
Multi-year ratio of assets to liabilities	Meets
Cash flow	Exceeds
Total margin and aggregated 3-year total margin	Exceeds
	$10/6 = 1.7$

<b>Expected Organizational/Operational outcomes</b>	<b>Meets</b>
Records compliance	Meets
On time records submission rate	Does Not Meet
Financial records submitted monthly	Meets
Annual audit	Exceeds
LEA Special Education performance determination	Meets
5-Year Forecasts submitted to ODE by deadline	Exceeds
Preopening Assurances documentation	Meets
Annual Report	Exceeds
Safety Plan and Blueprint to Ohio Attorney General	Exceeds
Code of Regulations	Exceeds
Fulfillment of meeting & training requirements	Exceeds
Open meeting requirements	Exceeds
Board compliance w/& execution of educational program	Meets
	$19/13 = 1.5$

<b>Expected Legal Compliance</b>	<b>Meets</b>
Requirements identified in statute	Meets
Compliance w/ all rules & law as applicable	Meets
	$1/1 = 1$



**Columbus Bilingual Academy North Overall Performance Framework Average = 1.2**



**Lorain Bilingual Preparatory Academy (K-6)**

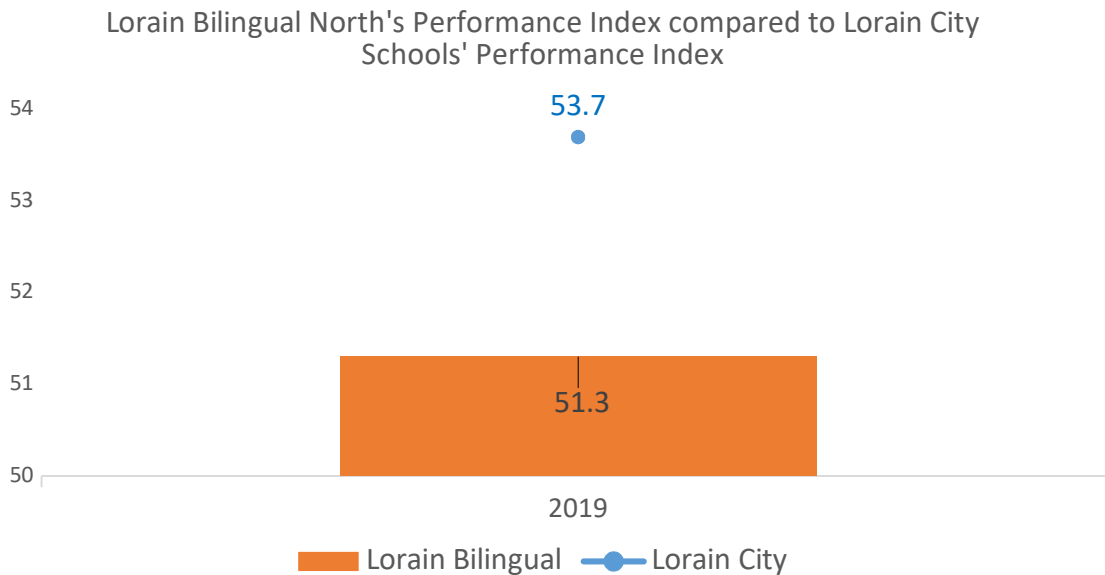
**307 W 7<sup>th</sup> St  
Lorain, Ohio 44052**

1. First year of Operation: 2019
2. Contract Term: June 30, 2021
3. Management Company: ACCEL Schools
4. Enrollment: 104 (86% economically disadvantaged, 12.5% ELL, 94% minority, 37% mobility)
5. Mission: The mission of the Lorain Bilingual Preparatory Academy is to allow students to become productive global citizens of the world by providing them with a world-class high-quality education.
6. Academic performance history and comparison

	Overall	Progress	Performance Index	Gap Closing	Improving At-Risk K3 reader
<b>2019</b>	F	C	51.3	F	NR

***Lorain Bilingual Academy ranks 18<sup>th</sup> of 20 Lorain City and Lorain charter schools (bottom 10th percentile) on the Performance Index***

**2019 results**



School	Overall Grade Letter Grade	Progress	Value Added Index	Gap Closing	Performance Index	Improving At-Risk K-3 reader
Lorain Bilingual Preparatory Academy	F	C	-1.46	F	51.3	NR
Hawthorne Elementary	C	C	-0.56	A	76.3	C
Admiral King Elementary	D	F	-4.34	F	71.8	D
Washington Elementary	C	B	-0.79	B	66.1	D
Lorain City Schools	D	F	-20.13	B	53.7	D

Strengths & Concerns:

Strengths:

- “C” in Progress; Lorain City district had an “F”
- Outscored the district in the value-added index

Concerns:

- “F” overall, “F” in Gap Closing
- Low performance index compared to area schools

8. Performance Framework:

Expected Academic outcomes	Does not meet
Performance Index	Does not meet
Indicators Met	Does not meet
Overall Value Added	Does not meet
Value Added - Lowest 20%	Meets
Value Added- students with disabilities	Not rated
Value Added- gifted	Not rated
Improving At-Risk K3 reader	Not rated
Gap Closing	Does not meet
Performance vs. Local Market PI	Does not meet
Performance vs. Local Market VA	Exceeds
Mission specific	To be determined
Student Subgroup (English learners)	To be determined
Chronic Absenteeism	Does not meet
	3/13 = .2

Expected Financial outcomes	Does not meet
Current ratio of assets to liabilities	Does not meet
Days cash	Does not meet
Current year enrollment variance	Does not meet
Multi-year ratio of assets to liabilities	N/A
Cash flow	Does not meet
Total margin and aggregated 3-year total margin	N/A

0/6 = 0

<b>Expected Operational outcomes</b>	<b>Meets</b>
Records compliance	Exceeds
On time records submission rate	Exceeds
Financial records submitted monthly	Exceeds
Annual audit	Exceeds
LEA Special Education performance determination	N/A
5-Year Forecasts submitted to ODE by deadline	Exceeds
Preopening Assurances documentation	Exceeds
Annual Report	N/A
Safety Plan and Blueprint to Ohio Attorney General	Meets
Family Survey results	Does not meet
Code of Regulations	Exceeds
Fulfillment of meeting & training requirements	Exceeds
Open meeting requirements	Exceeds
Board compliance w/& execution of educational program	Meets
	20/12 = 1.7

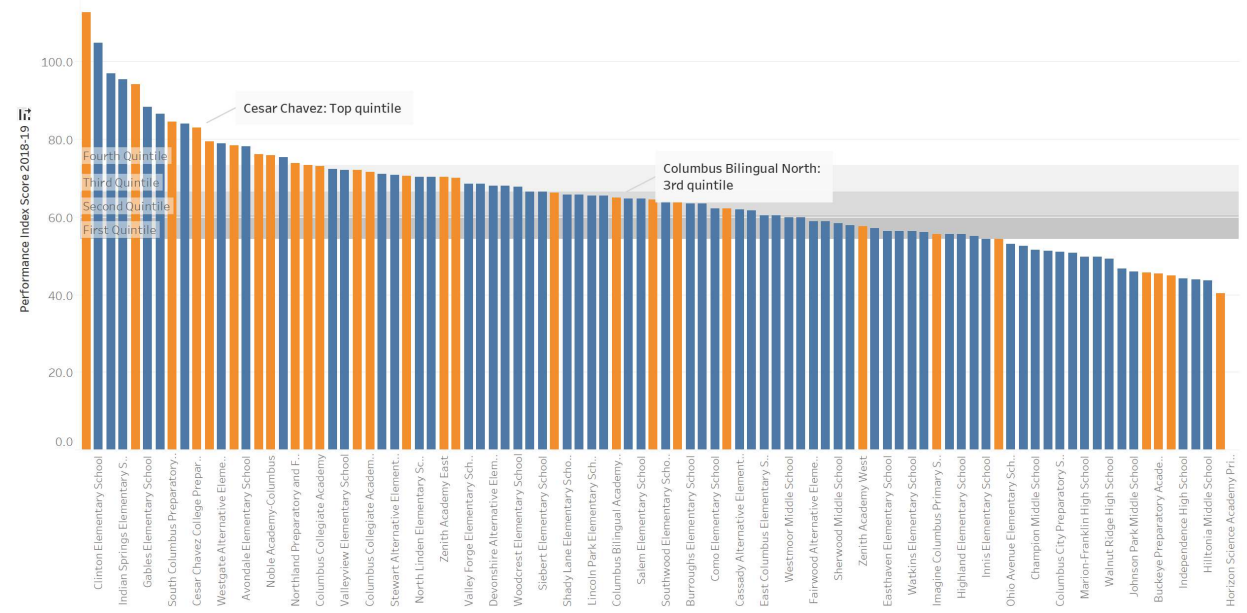
<b>Expected Legal Compliance</b>	<b>Meets</b>
Requirements identified in statute	Meets
Compliance w/ all rules & law as applicable	Meets
	1/1 = 1

**Lorain Bilingual Academy Overall Performance Framework Average = 0.75**

---

Performance verses local market: Columbus

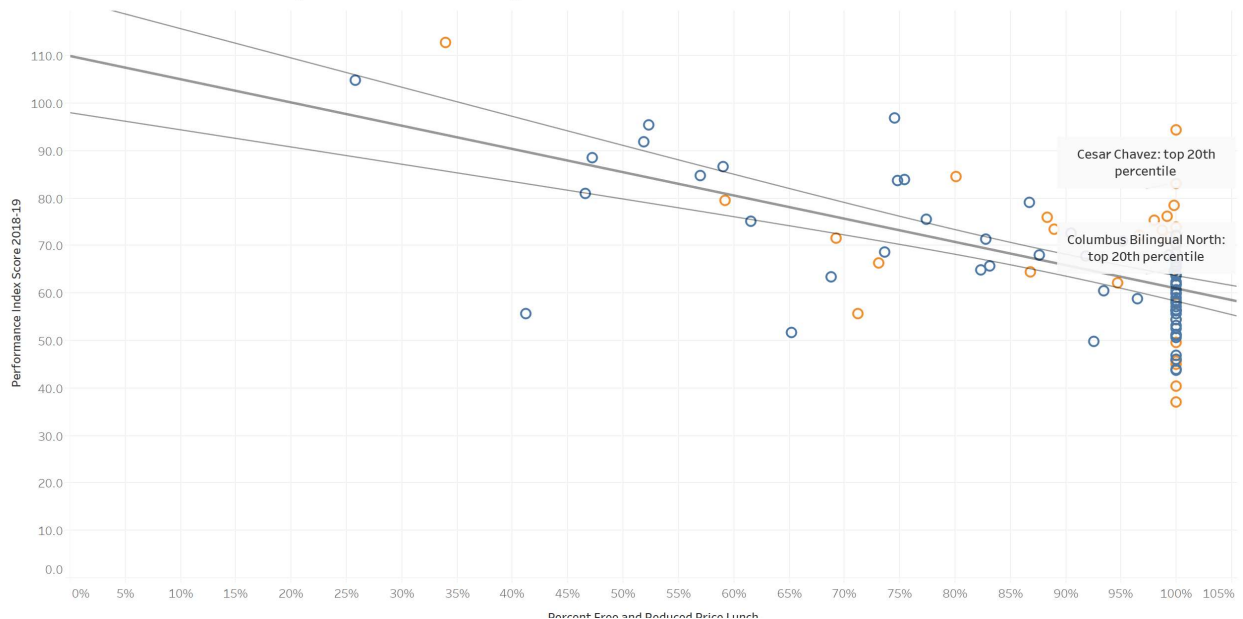
Columbus Elementary and Middle schools; Relative Proficiency



Cesar Chavez College Preparatory School falls in the top quintile and Columbus Bilingual Academy North falls in the third quintile on the Performance Index ranking.

Performance Index and Economic disadvantage (similar schools)

Columbus: Performance Index by Economic Disadvantage



Cesar Chavez College Preparatory School and Columbus Bilingual Academy North fall in the top quintile on the Performance Index vs. Economic Disadvantage representation.

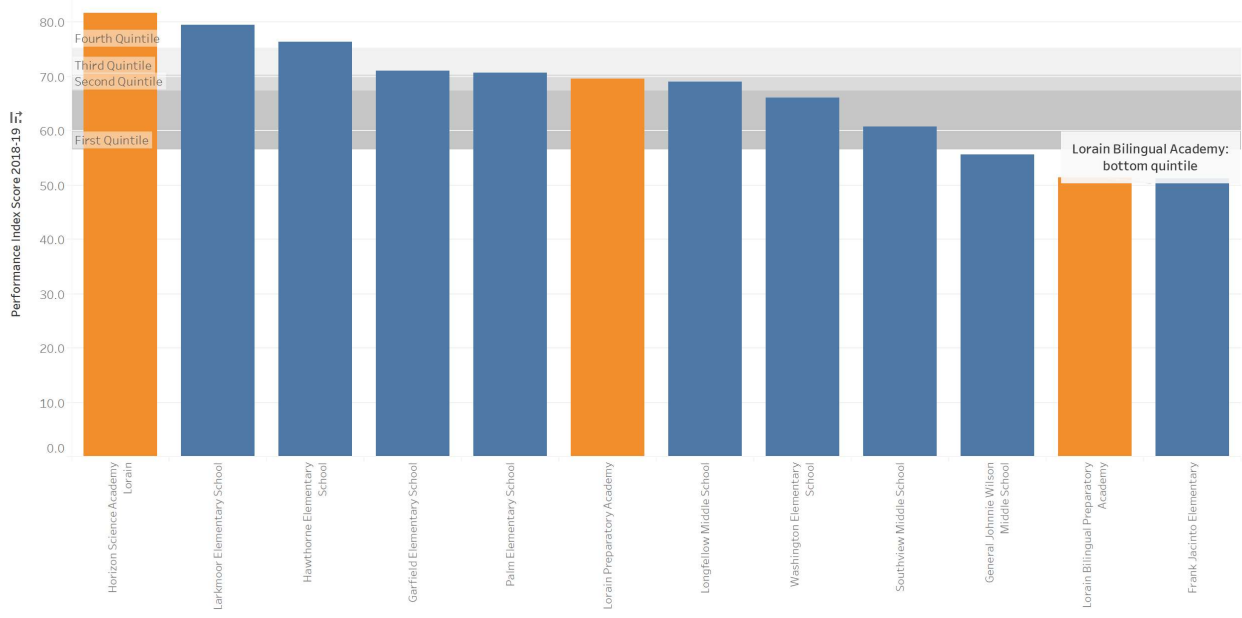
Columbus: Value Added Composite by Economic Disadvantage



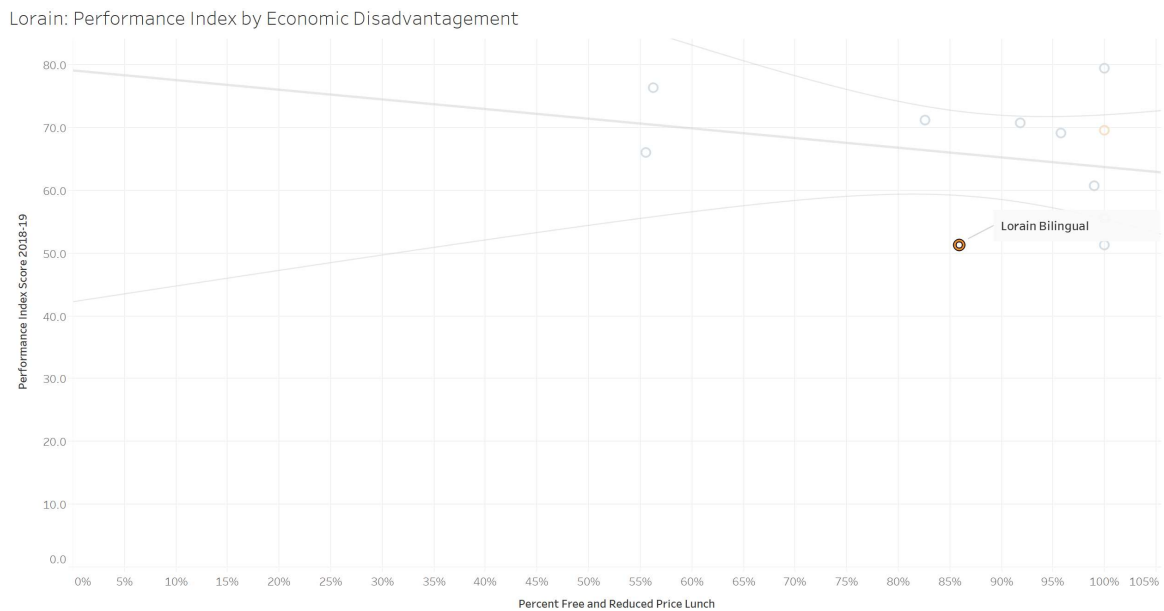
Cesar Chavez College Preparatory School falls in the top quintile and Columbus Bilingual Academy North falls below the 50<sup>th</sup> percentile in Value Added Composite by economic disadvantage.

### Performance versus local market: Lorain

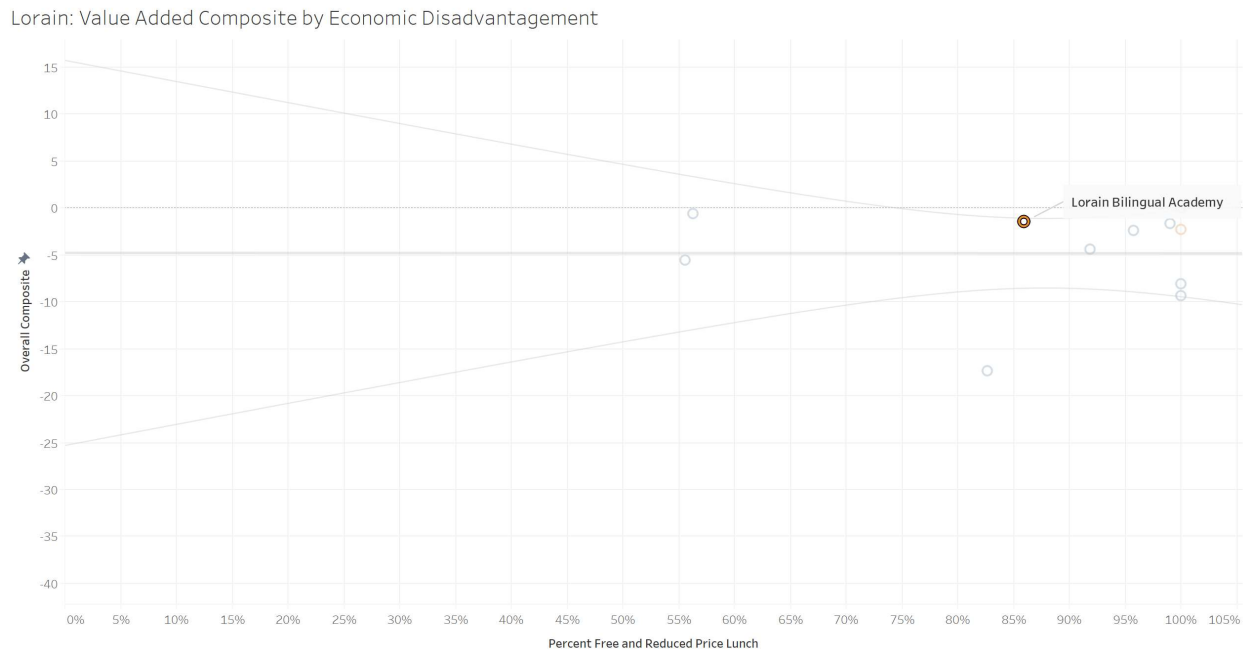
Lorain Elementary and Middle schools; Relative Proficiency



Lorain Bilingual Academy falls in the bottom quintile on the Performance Index ranking.



Lorain Bilingual Academy falls in the bottom quintile on the Performance Index vs. Economic disadvantage ranking.



Lorain Bilingual Academy falls in the second quintile on the Value-Added Composite vs. Economic disadvantage ranking.